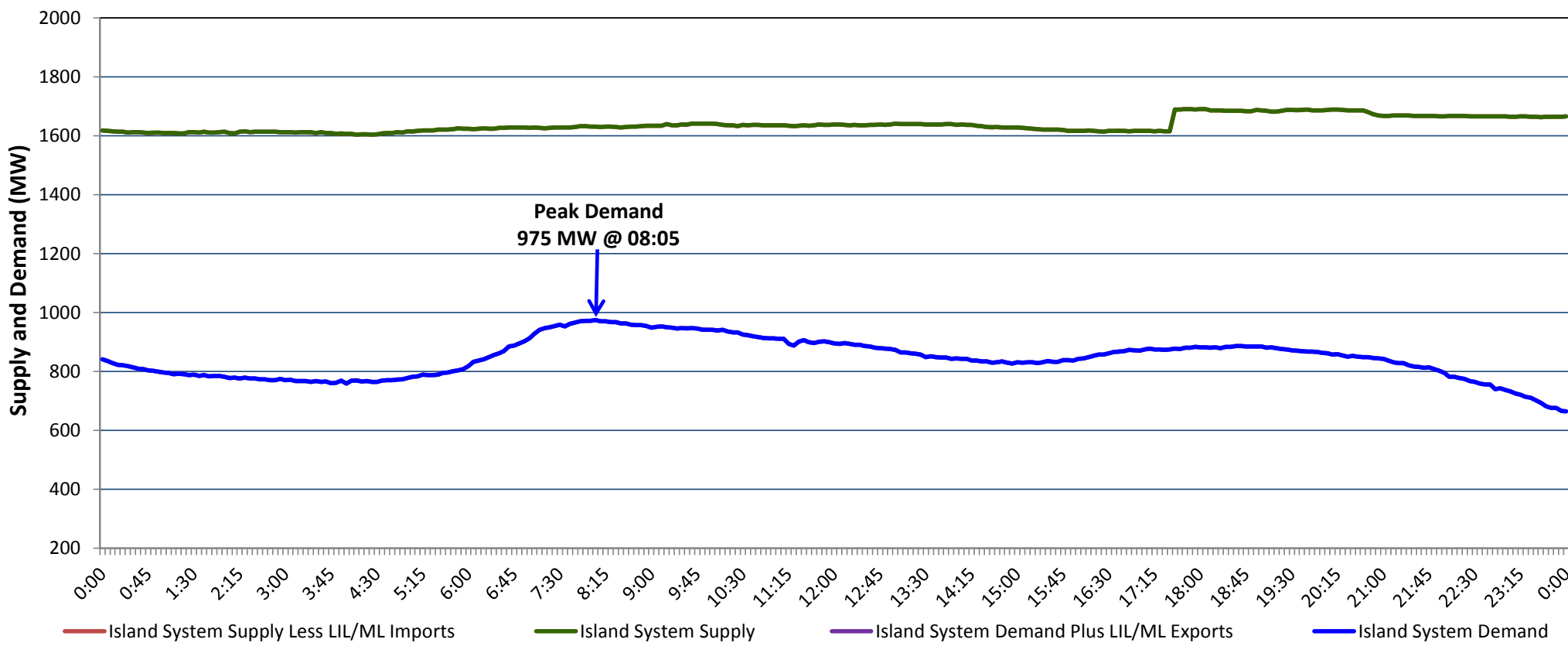


Newfoundland Labrador Hydro (NLH)
Supply and Demand Status Report Filed Tuesday, October 30, 2018

Section 1
Island Interconnected System Supply, Demand & Exports
Actual 24 Hour System Performance For Monday, October 29, 2018



Supply Notes For October 29, 2018

- 1,2
- A

As of 1623 hours, September 28, 2018, Holyrood Unit 3 unavailable due to planned outage 110 MW (150 MW).
- B

As of 0837 hours, October 21, 2018, Holyrood Unit 1 available at 140 MW (170 MW).
- C

As of 1155 hours, October 22, 2018, Upper Salmon Unit unavailable due to planned outage (84 MW).
- D

As of 1500 hours, October 26, 2018, Stephenville Gas Turbine available at 25 MW (50 MW).
- E

At 1734 hours, October 29, 2018, Bay d'Espoir Unit 3 available (76.5 MW).

Section 2
Island Interconnected Supply and Demand

Tue, Oct 30, 2018	Island System Outlook ³			Seven-Day Forecast	Temperature (°C)		Island System Daily Peak Demand (MW)	
					Morning	Evening		
Available Island System Supply: ⁵ NLH Island Generation: ⁴ NLH Island Power Purchases: ⁶ Other Island Generation: ML/LIL Imports:	1,690	MW		Tuesday, October 30, 2018	11	12	955	955
	1,405	MW		Wednesday, October 31, 2018	8	5	1,130	1,130
	85	MW		Thursday, November 01, 2018	4	4	1,165	1,165
	200	MW		Friday, November 02, 2018	8	5	1,045	1,045
	-	MW		Saturday, November 03, 2018	4	7	1,155	1,155
	13 °C	N/A	°C	Sunday, November 04, 2018	14	8	1,170	1,170
	1,230	MW		Monday, November 05, 2018	5	2	1,230	1,230
Current St. John's Temperature & Windchill:								
7-Day Island Peak Demand Forecast:								

Supply Notes For October 30, 2018

- 3
- Notes:
1.

Generation outages for running and corrective maintenance are included. These are not unusual for power system operations. They generally do not impact customer supply. The power system operators schedule outages to system equipment whenever possible to coincide with periods when customer demands are low and sufficient supply reserves are available. However, from time to time equipment outages are necessary and reserves may be impacted.
2.

Due to the Island System having no synchronous connections to the larger North American grid, when there is a sudden loss of large generating units some customer's load must be interrupted for short periods to bring generation output equal to customer demand. This automatic action of power system protection, referred to as under frequency load shedding, is necessary to ensure the integrity and reliability of system equipment. Under frequency events typically occur 5 to 8 times per year on the Island Interconnected System and the resultant customer load interruptions are generally less than 30 minutes.
3.

As of 0800 Hours.
4.

Gross output including station service at Holyrood (24.5 MW) and improved NLH hydraulic output due to water levels (35 MW).
5.

Gross output from all Island sources (including Note 4).
6.

NLH Island Power Purchases include: CBPP Co-Gen, Nalcor Exploits, Rattle Brook, Star Lake, Wind Generation and capacity assistance (when applicable).
7.

Adjusted for curtailable load, market activities and the impact of voltage reduction when applicable.

Section 3
Island Peak Demand Information
Previous Day Actual Peak and Current Day Forecast Peak

Mon, Oct 29, 2018	Actual Island Peak Demand ⁸	08:05	975 MW
Tue, Oct 30, 2018	Forecast Island Peak Demand		955 MW

Notes: 8. Island Demand / LIL / ML Exports (where applicable) is supplied by NLH generation and purchases, plus generation owned and operated by Newfoundland Power and Corner Brook Pulp & Paper (Deer Lake Power, DLP).